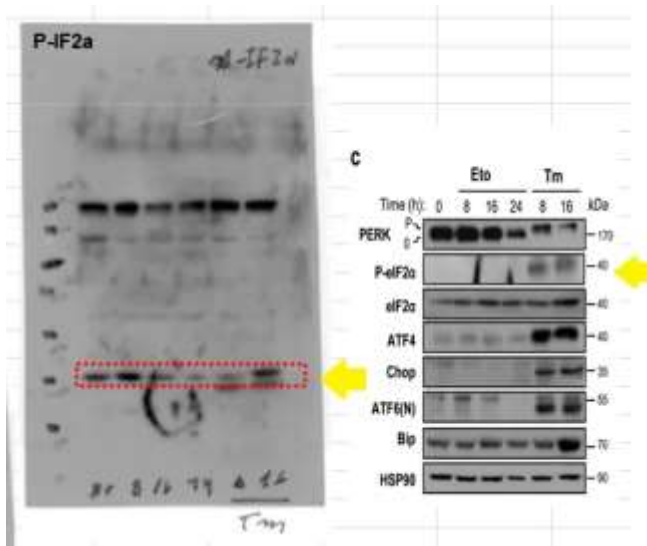


1. Publication

Dufey E, Bravo-San Pedro JM, Eggers C, González-Quiroz M, Urra H, Sagredo AI, Sepulveda D, Pihán P, Carreras-Sureda A, Hazari Y, Sagredo EA, Gutierrez D, Valls C, Papaioannou A, Acosta-Alvear D, Campos G, Domingos PM, Pedoux R, Chevet E, Alvarez A, Godoy P, Walter P, Glavic A, Kroemer G, Hetz C. **Genotoxic stress triggers the activation of IRE1 α -dependent RNA decay to modulate the DNA damage response.** *Nat Commun.* 2020 May 14;11(1):2401. doi: 10.1038/s41467-020-15694-y. PMID: 32409639; PMCID: PMC7224204.

2. Pubpeer Comments

Supplemental Fig. 1C: Blot doesn't match with the raw data. Could authors check please?



3. Answer

We apologize for this mistake that occurred in figure preparation. These experiments were performed by Estefanie Dufey and the error generated when the PhD student Matias Gonzalez reformatted the figures. There are basically two issues identified here:

1. During figure preparation the red rectangle in the data source to indicate the cropped image moved up and selected a non-specific band that was above the signal of the phosphorylated form of eIF2 α . We didn't notice this despite having a clear positive control with Tunicamycin treatment (Figure 1A).
2. When we assembled the final figure the areas did not match to all panels, and to maintain the symmetry of the figure the image was enlarged in the height (instead of rescanning the original film to include a larger area). We apologize for this practice of stretching this band, but as you can conclude the figure matches with the raw data provided.

A correction at the journal has been filed and accepted (see figure 2) to replace the supplementary information at Nature Communications with a corrected version (Figure 1B-C). We apologize for this mistake in figure preparation. Importantly, the biological

conclusion of the experiment is not altered by this mistake. Raw data and explanation have been posted in Pubpeer.

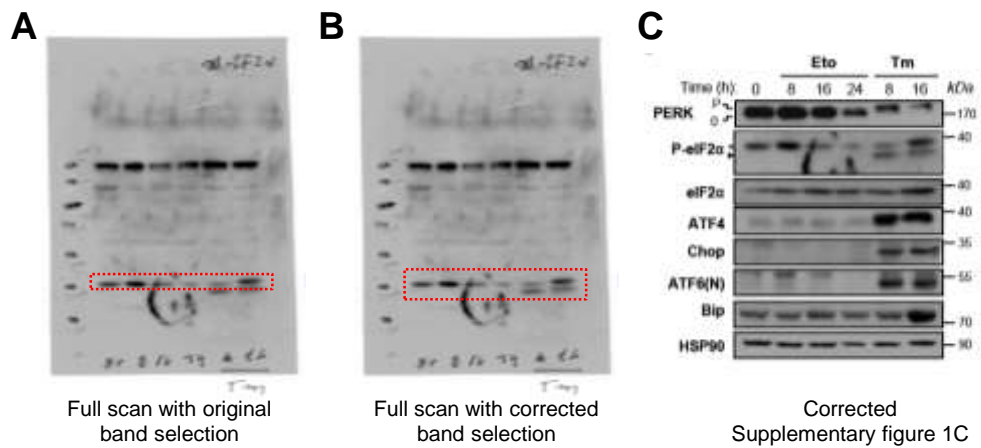


Figure 1. Raw data presentation and figure correction. (A) Band selection of the raw data blot of the phosphorylated form of eIF2 α in the old version of the manuscript submitted to Nature Communications Journal. (B) Corrected band selection of the raw data blot. This selection includes two bands where the lower one corresponds to the specific signal of the antibody. (C) Corrected supplementary figure 1 submitted and accepted as correction in Nature Communications (*, unspecific band, the arrow indicates the specific band for P-eIF2 α).

Email by the editorial office of Nature Communications: correction accepted.



Claudio Hetz <chetz@uchile.cl>

New supplementary information file

Para: Claudio Hetz <chetz@uchile.cl>

14 de enero de 2021, 17:14

Dear Dr. Hetz,

Thank you for sending the revised supplementary information file. We will proceed to publish a correction on this.

Best regards,

